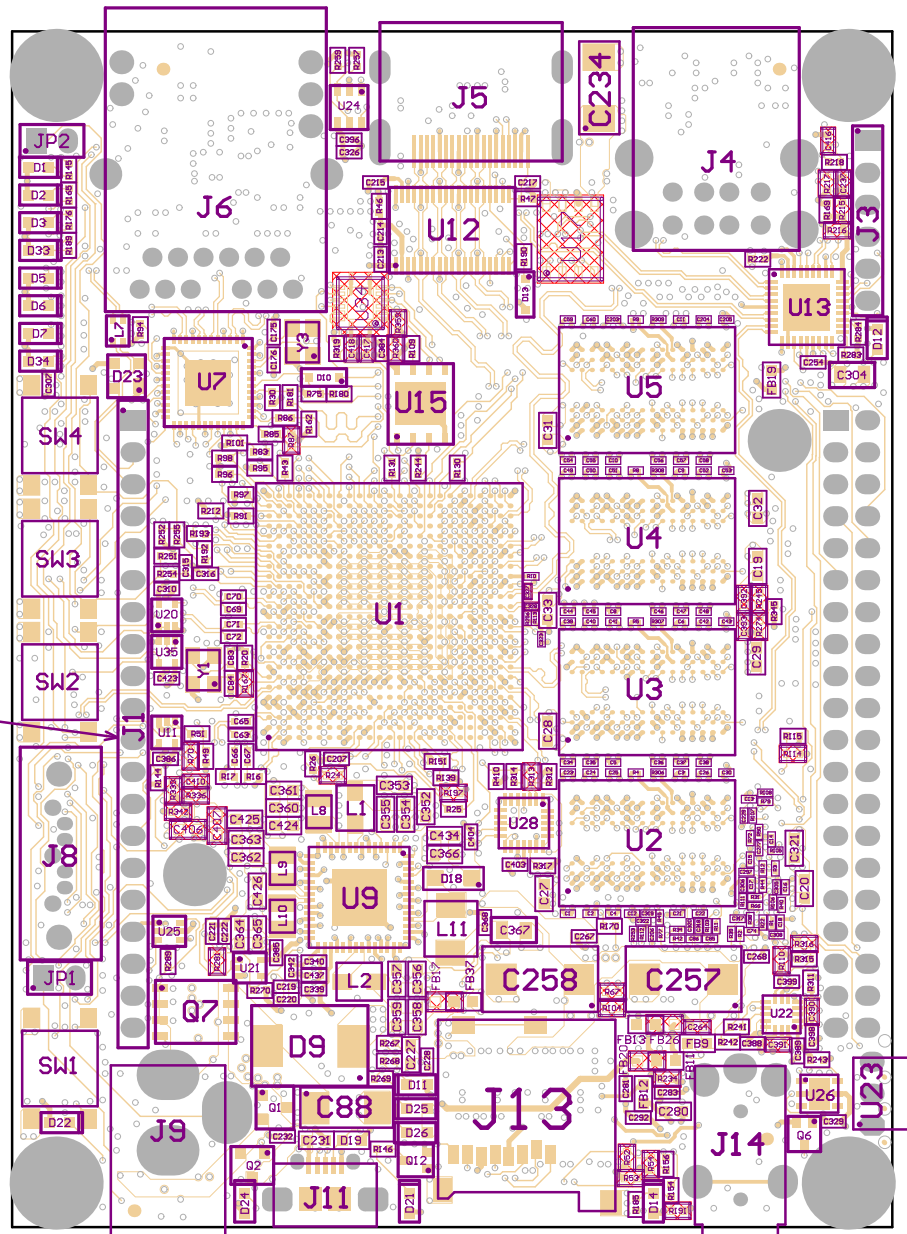
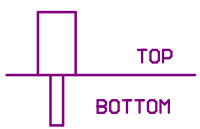


Assembly TOP of OpenRex U111A

MAX

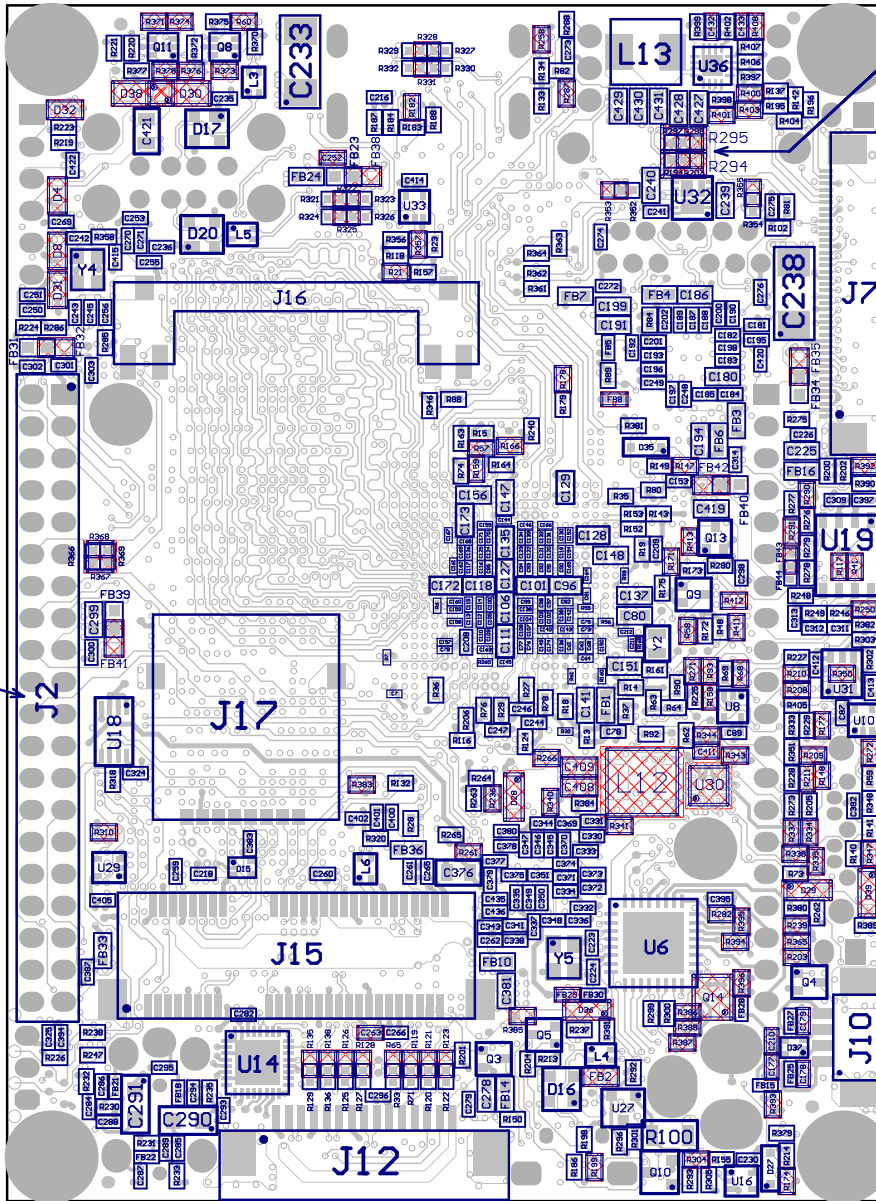


IMPORTANT:
PLACE J1 PLASTIC
SIDE ON THE TOP

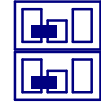


Assembly BOTTOM of OpenRex V111A

MAX

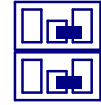


FITTING OPTION 1



FIT 2X 0402

FITTING OPTION 2



FIT 2X 0402

FITTING OPTION 3



FIT 2X 0805

IMPORTANT:
PLACE J2 PLASTIC
SIDE ON THE BOTTOM

