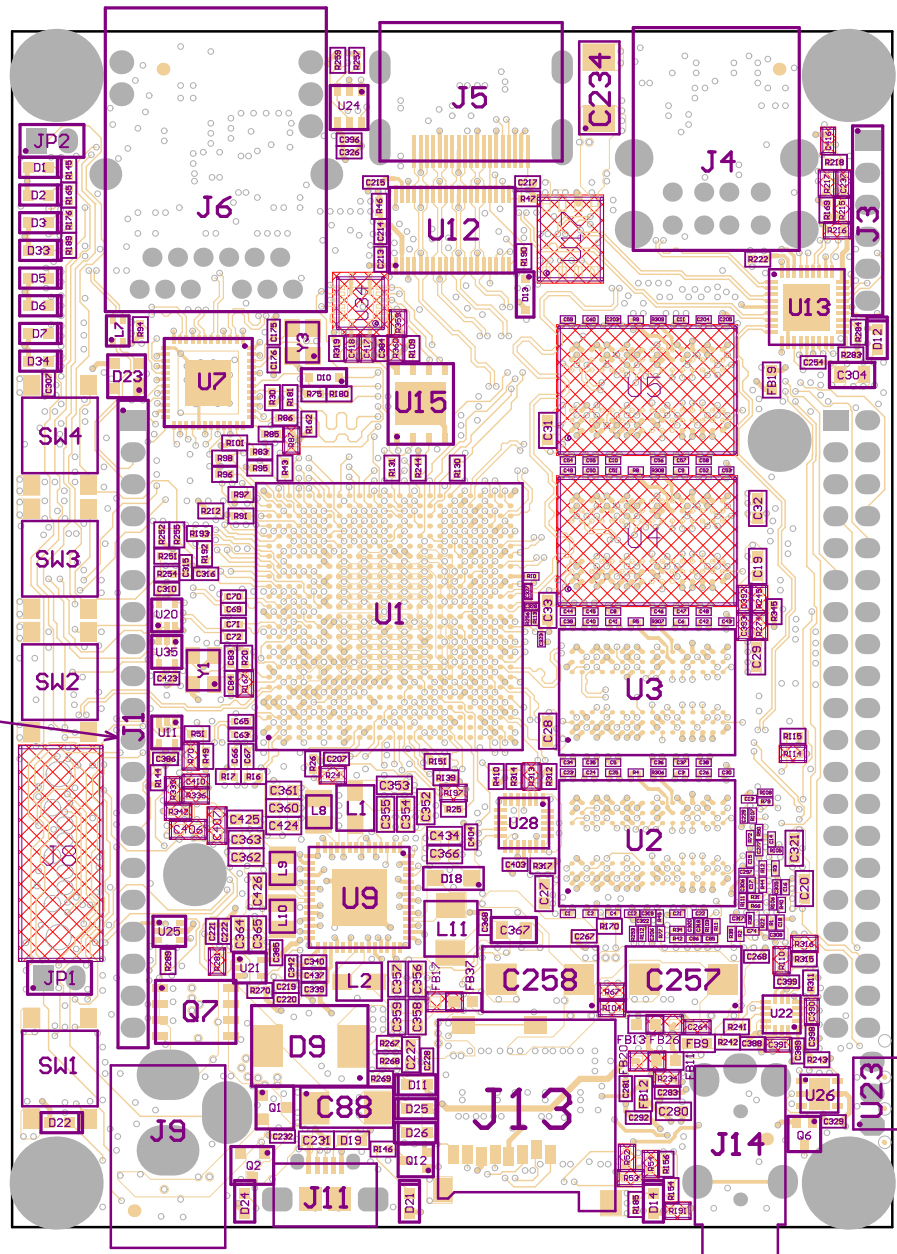
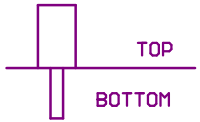


# Assembly TOP of OpenRex U111A

## Basic

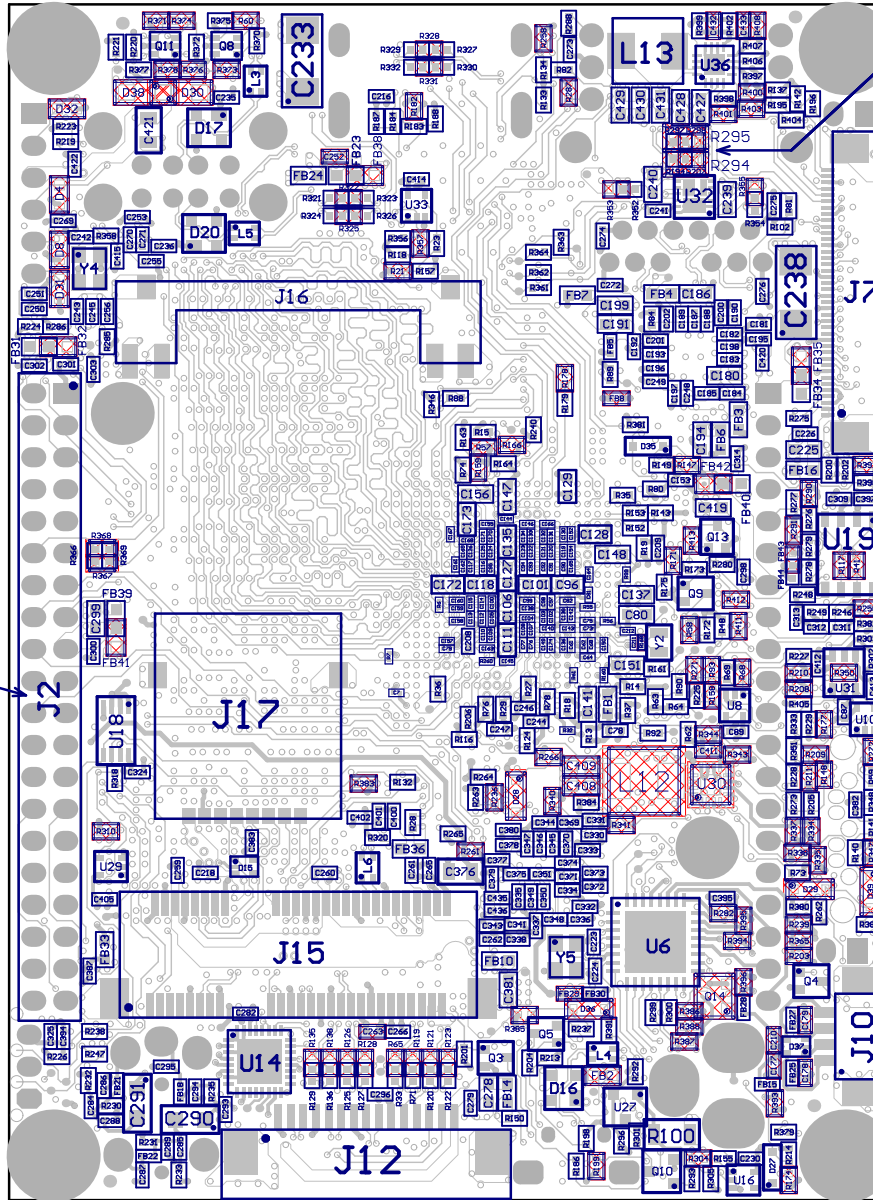


**IMPORTANT:**  
PLACE J1 PLASTIC  
SIDE ON THE TOP

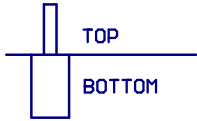


# Assembly BOTTOM of OpenRex V111A

## Basic



**IMPORTANT:**  
PLACE J2 PLASTIC  
SIDE ON THE BOTTOM



FITTING OPTION 1

FIT 2X 0402

FITTING OPTION 2

FIT 2X 0402

FITTING OPTION 3

FIT 2X 0805