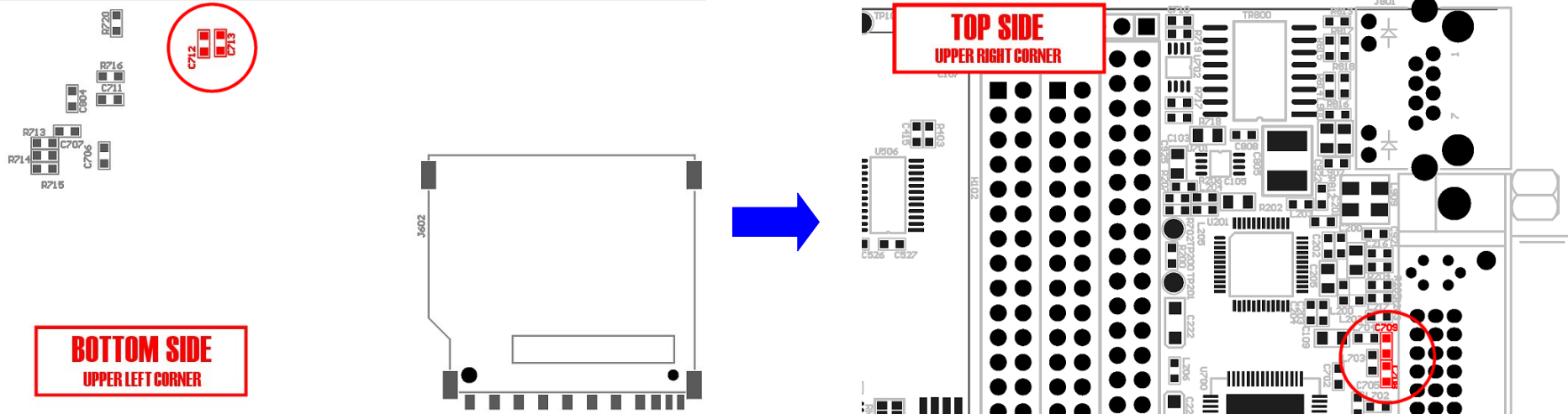


I2c BUS ERRATA #1

As the intensive I2C BUS communication may influence reliability of the EDT multitouch capacitive display driver, following changes are recommended for i.MX25 Base Boards used with EDT display purchased before November 1, 2012.

- 1** Remove capacitors **150pF** on positions C712, C713, C708 and C709.



- 2** Replace beads by resistors **0R** on positions L705, L706, L703 and L704.

